

LOVING LINES – CAL

PART 2

DESIGNED BY

MARJOLEIN KOOIMAN



PATTERN - INFO

This is the lay-out of both blankets. The numbers are the numbers of the parts. As you can see most squares are made 4 times except the last middle square of the large blanket. When I release part 5, I also release the border for **both** of the blankets.

My blankets are squares, but the small blanket can be made as rectangle by making square 5 and 6 two times.

The most important thing is **COUNTING** your stitches between the corners, because a mistake can be easily made and will be found when working the next row. In the beginning it is not much work to rip out a round, but there are rounds of 150+ stitches. So count your stitches then you will find a mistake just before you need to make the next corner.

In most parts you will find all 4 triangles. Look careful, the pattern is the same for the first 16 rows of every triangle and all the squares, but after that it can be different for every triangle. **Make sure you do not mess up the order of the triangles!!**

The chart is divided over 2 pages and in color. I used colors to make it easier to 'read' the pattern. If you have a black/white printer it is no problem because the colors have enough contrast.

| | | | |
|---|---|---|---|
| 1 | 2 | 3 | 1 |
| 3 | 4 | 4 | 2 |
| 2 | 4 | 4 | 3 |
| 1 | 3 | 2 | 1 |

| | | | | |
|---|---|---|---|---|
| 1 | 2 | 5 | 3 | 1 |
| 3 | 4 | 6 | 4 | 2 |
| 5 | 6 | 7 | 6 | 5 |
| 2 | 4 | 6 | 4 | 3 |
| 1 | 3 | 5 | 2 | 1 |

RETURN PASS

Attaching : Slide and turn, PT 1 loop,

slide and turn, PT 2 loops until you have 5 loops on the hook, slide and turn until the last row.

THE PATTERN

You need to make this square 4 times.

If you need to start a new skein for the Return Pass half way your square it needs a little planning! You need to do it when you make the first half of the corner. If you do it anywhere else you will notice it!

HOW TO START THE SQUARE

Here is a short instruction for the start of the square. Complete instruction can be found in the tutorial.

| | | | | | | | | | | | | | |
|---|----|----|----|---|---|----|---|---|----|---|---|----|---|
| | 12 | 11 | 10 | 9 | 8 | 7 | 6 | 5 | 4 | 3 | 2 | 1 | |
| 3 | ~ | ~ | ~ | ~ | ~ | ~ | ~ | ~ | ~ | ~ | ~ | ~ | |
| | V | o | oo | V | o | oo | V | o | oo | V | o | oo | 3 |
| 2 | ~ | ~ | ~ | ~ | ~ | ~ | ~ | ~ | ~ | ~ | ~ | ~ | |
| | o | o | o | o | o | o | o | o | o | o | o | o | 2 |
| 1 | | ~ | | ~ | | ~ | | ~ | | ~ | | ~ | |
| | | T | | T | | T | | T | | T | | T | 1 |
| | 12 | 11 | 10 | 9 | 8 | 7 | 6 | 5 | 4 | 3 | 2 | 1 | |

Round 1

Magic circle (1loop on the hook) 5TES (6 loops on the hook)

Round 2

Close the magic circle

6x (TKS, TFS)

Round 3

(2nd half corner), TKS, (1st half corner),

(2nd half corner), TKS, (1st half corner),

(2nd half corner), TKS, (1st half corner),

(2nd half corner), TKS, (1st half corner)

On the last 2 pages you will find the charts from row 4 and up. Right below you will find the written instructions for the complete square.

Round 4

(2nd half corner), 3TKS, (1st half corner),

(2nd half corner), 3TKS, (1st half corner),

(2nd half corner), 3TKS, (1st half corner),

(2nd half corner), 3TKS, (1st half corner)

Round 5

(2nd half corner), TKS, TRS, TKS, TRS, TKS, (1st half corner),
(2nd half corner), TKS, TRS, TKS, TRS, TKS, (1st half corner),
(2nd half corner), TKS, TRS, TKS, TRS, TKS, (1st half corner),
(2nd half corner), TKS, TRS, TKS, TRS, TKS, (1st half corner)

Round 6

(2nd half corner), TKS, 2TRS, TKS, 2TRS, TKS, (1st half corner),
(2nd half corner), TKS, 2TRS, TKS, 2TRS, TKS, (1st half corner),
(2nd half corner), TKS, 2TRS, TKS, 2TRS, TKS, (1st half corner),
(2nd half corner), TKS, 2TRS, TKS, 2TRS, TKS, (1st half corner)

Round 7

(2nd half corner), TKS, 2TRS, 3TKS, 2TRS, TKS, (1st half corner),
(2nd half corner), TKS, 2TRS, 3TKS, 2TRS, TKS, (1st half corner),
(2nd half corner), TKS, 2TRS, 3TKS, 2TRS, TKS, (1st half corner),
(2nd half corner), TKS, 2TRS, 3TKS, 2TRS, TKS, (1st half corner)

Round 8

(2nd half corner), TKS, 2TRS, 5TKS, 2TRS, TKS, (1st half corner),
(2nd half corner), TKS, 2TRS, 5TKS, 2TRS, TKS, (1st half corner),
(2nd half corner), TKS, 2TRS, 5TKS, 2TRS, TKS, (1st half corner),
(2nd half corner), TKS, 2TRS, 5TKS, 2TRS, TKS, (1st half corner)

Round 9

(2nd half corner), TKS, 2TRS, 7TKS, 2TRS, TKS, (1st half corner),
(2nd half corner), TKS, 2TRS, 7TKS, 2TRS, TKS, (1st half corner),
(2nd half corner), TKS, 2TRS, 7TKS, 2TRS, TKS, (1st half corner),
(2nd half corner), TKS, 2TRS, 7TKS, 2TRS, TKS, (1st half corner)

Round 10

(2nd half corner), TKS, 2TRS, TKS, 2TRS, 3TKS, 2TRS, TKS, 2TRS, TKS, (1st half corner),
(2nd half corner), TKS, 2TRS, TKS, 2TRS, 3TKS, 2TRS, TKS, 2TRS, TKS, (1st half corner),
(2nd half corner), TKS, 2TRS, TKS, 2TRS, 3TKS, 2TRS, TKS, 2TRS, TKS, (1st half corner),
(2nd half corner), TKS, 2TRS, TKS, 2TRS, 3TKS, 2TRS, TKS, 2TRS, TKS, (1st half corner)

Round 11

(2nd half corner), TKS, 2TRS, TKS, 9TRS, TKS, 2TRS, TKS, (1st half corner),
(2nd half corner), TKS, 2TRS, TKS, 9TRS, TKS, 2TRS, TKS, (1st half corner),
(2nd half corner), TKS, 2TRS, TKS, 9TRS, TKS, 2TRS, TKS, (1st half corner),
(2nd half corner), TKS, 2TRS, TKS, 9TRS, TKS, 2TRS, TKS, (1st half corner)

Round 12

(2nd half corner), TKS, 2TRS, TKS, 2TRS, 2TKS, 3TRS, 2TKS, 2TRS, TKS, 2TRS, TKS,
(1st half corner),
(2nd half corner), TKS, 2TRS, TKS, 2TRS, 2TKS, 3TRS, 2TKS, 2TRS, TKS, 2TRS, TKS,
(1st half corner),
(2nd half corner), TKS, 2TRS, TKS, 2TRS, 2TKS, 3TRS, 2TKS, 2TRS, TKS, 2TRS, TKS,
(1st half corner),
(2nd half corner), TKS, 2TRS, TKS, 2TRS, 2TKS, 3TRS, 2TKS, 2TRS, TKS, 2TRS, TKS,
(1st half corner)

Round 13

(2nd half corner), TKS, 2TRS, TKS, 2TRS, TKS, 2TRS, TKS, TRS, TKS, 2TRS, TKS, 2TRS, TKS, 2TRS,
TKS, (1st half corner),
(2nd half corner), TKS, 2TRS, TKS, 2TRS, TKS, 2TRS, TKS, TRS, TKS, 2TRS, TKS, 2TRS, TKS, 2TRS,
TKS, (1st half corner),
(2nd half corner), TKS, 2TRS, TKS, 2TRS, TKS, 2TRS, TKS, TRS, TKS, 2TRS, TKS, 2TRS, TKS, 2TRS,
TKS, (1st half corner),
(2nd half corner), TKS, 2TRS, TKS, 2TRS, TKS, 2TRS, TKS, TRS, TKS, 2TRS, TKS, 2TRS, TKS, 2TRS,
TKS, (1st half corner)

Round 14

(2nd half corner), TKS, 3TRS, TKS, 5TRS, TKS, TRS, TKS, 5TRS, TKS, 3TRS, TKS, (1st half corner),
(2nd half corner), TKS, 3TRS, TKS, 5TRS, TKS, TRS, TKS, 5TRS, TKS, 3TRS, TKS, (1st half corner),
(2nd half corner), TKS, 3TRS, TKS, 5TRS, TKS, TRS, TKS, 5TRS, TKS, 3TRS, TKS, (1st half corner),
(2nd half corner), TKS, 3TRS, TKS, 5TRS, TKS, TRS, TKS, 5TRS, TKS, 3TRS, TKS, (1st half corner)

Round 15

(2nd half corner), TKS, 5TRS, TKS, 3TRS, TKS, 3TRS, TKS, 3TRS, TKS, 5TRS, TKS,
(1st half corner),
(2nd half corner), TKS, 5TRS, TKS, 3TRS, TKS, 3TRS, TKS, 3TRS, TKS, 5TRS, TKS,
(1st half corner),
(2nd half corner), TKS, 5TRS, TKS, 3TRS, TKS, 3TRS, TKS, 3TRS, TKS, 5TRS, TKS,
(1st half corner),
(2nd half corner), TKS, 5TRS, TKS, 3TRS, TKS, 3TRS, TKS, 3TRS, TKS, 5TRS, TKS,
(1st half corner)

Round 16

(2nd half corner), TKS, 7TRS, 3TKS, 5TRS, 3TKS, 7TRS, TKS, (1st half corner),
(2nd half corner), TKS, 7TRS, 3TKS, 5TRS, 3TKS, 7TRS, TKS, (1st half corner),
(2nd half corner), TKS, 7TRS, 3TKS, 5TRS, 3TKS, 7TRS, TKS, (1st half corner),
(2nd half corner), TKS, 7TRS, 3TKS, 5TRS, 3TKS, 7TRS, TKS, (1st half corner)

Round 17

(2nd half corner), TKS, 27TRS, TKS, (1st half corner),
(2nd half corner), TKS, 27TRS, TKS, (1st half corner),
(2nd half corner), TKS, 27TRS, TKS, (1st half corner),
(2nd half corner), TKS, 27TRS, TKS, (1st half corner)

Round 18

(2nd half corner), 2TKS, 8TRS, 3TKS, 5TRS, 3TKS, 5TRS, 5TKS, (1st half corner),
(2nd half corner), 5TKS, 10TRS, TKS, 13TRS, 2TKS, (1st half corner),
(2nd half corner), 2TKS, 8TRS, 3TKS, 5TRS, 3TKS, 8TRS, 2TKS, (1st half corner),
(2nd half corner), 2TKS, 27TRS, 2TKS, (1st half corner)

Round 19

(2nd half corner), TKS, TRS, 2TKS, 6TRS, TKS, 3TRS, TKS, 3TRS, TKS, 3TRS, TKS, 4TRS, TKS,
4TRS, TKS, (1st half corner),
(2nd half corner), TKS, 4TRS, TKS, 9TRS, 3TKS, 11TRS, 2TKS, TRS, TKS, (1st half corner),
(2nd half corner), TKS, TRS, 2TKS, 6TRS, TKS, 3TRS, TKS, 3TRS, TKS, 3TRS, TKS, 6TRS, 2TKS,
TRS, TKS, (1st half corner),
(2nd half corner), TKS, TRS, 2TKS, 25TRS, 2TKS, TRS, TKS, (1st half corner)

Round 20

(2nd half corner), 2TKS, 2TRS, 2TKS, 4TRS, TKS, 5TRS, TKS, TRS, TKS, 5TRS, TKS, 3TRS, TKS,
TRS, 5TKS, (1st half corner),
(2nd half corner), 5TKS, TRS, TKS, 8TRS, TKS, TRS, TKS, TRS, TKS, 9TRS, 2TKS, 2TRS, 2TKS,
(1st half corner),
(2nd half corner), 2TKS, 2TRS, 2TKS, 4TRS, TKS, 5TRS, TKS, TRS, TKS, 5TRS, TKS, 4TRS, 2TKS,
2TRS, 2TKS, (1st half corner),
(2nd half corner), 2TKS, 2TRS, 2TKS, 23TRS, 2TKS, 2TRS, 2TKS, (1st half corner)

Round 21

(2nd half corner), TKS, TRS, 2TKS, 2TRS, 2TKS, 3TRS, TKS, 2TRS, TKS, 2TRS, TKS, TRS, TKS, 2TRS, TKS, 2TRS, TKS, 3TRS, TKS, TRS, TKS, 4TRS, TKS, (1st half corner),

(2nd half corner), TKS, 4TRS, TKS, TRS, TKS, 7TRS, TKS, 2TRS, TKS, 2TRS, TKS, 7TRS, 2TKS, 2TRS, 2TKS, TRS, TKS, (1st half corner),

(2nd half corner), TKS, TRS, 2TKS, 2TRS, 2TKS, 3TRS, TKS, 2TRS, TKS, 2TRS, TKS, TRS, TKS, 2TRS, TKS, 2TRS, TKS, 3TRS, 2TKS, 2TRS, 2TKS, TRS, TKS, (1st half corner),

(2nd half corner), TKS, TRS, 2TKS, 2TRS, 2TKS, 21TRS, 2TKS, 2TRS, 2TKS, TRS, TKS, (1st half corner)

Round 22

(2nd half corner), 2TKS, 2TRS, 2TKS, 2TRS, 2TKS, 3TRS, 2TKS, 3TRS, TKS, TRS, TKS, 3TRS, 2TKS, 4TRS, TKS, TRS, TKS, TRS, 5TKS, (1st half corner),

(2nd half corner), 5TKS, TRS, TKS, TRS, TKS, 6TRS, TKS, 3TRS, TKS, 3TRS, TKS, 5TRS, 2TKS, 2TRS, 2TKS, 2TRS, 2TKS, (1st half corner),

(2nd half corner), 2TKS, 2TRS, 2TKS, 2TRS, 2TKS, 3TRS, 2TKS, 3TRS, TKS, TRS, TKS, 3TRS, 2TKS, 3TRS, 2TKS, 2TRS, 2TKS, 2TRS, 2TKS, (1st half corner),

(2nd half corner), 2TKS, 2TRS, 2TKS, 2TRS, 2TKS, 19TRS, 2TKS, 2TRS, 2TKS, 2TRS, 2TKS, (1st half corner)

Round 23

(2nd half corner), 4TKS, 2TRS, 2TKS, 2TRS, 2TKS, 7TRS, TKS, TRS, TKS, 9TRS, TKS, TRS, TKS, TRS, TKS, 4TRS, TKS, (1st half corner),

(2nd half corner), TKS, 4TRS, TKS, TRS, TKS, TRS, TKS, 5TRS, TKS, 3TRS, 3TKS, 3TRS, TKS, 3TRS, 2TKS, 2TRS, 2TKS, 2TRS, 4TKS, (1st half corner),

(2nd half corner), 4TKS, 2TRS, 2TKS, 2TRS, 2TKS, 7TRS, TKS, TRS, TKS, 7TRS, 2TKS, 2TRS, 2TKS, 2TRS, 4TKS, (1st half corner),

(2nd half corner), 4TKS, 2TRS, 2TKS, 2TRS, 2TKS, 17TRS, 2TKS, 2TRS, 2TKS, 2TRS, 4TKS, (1st half corner)

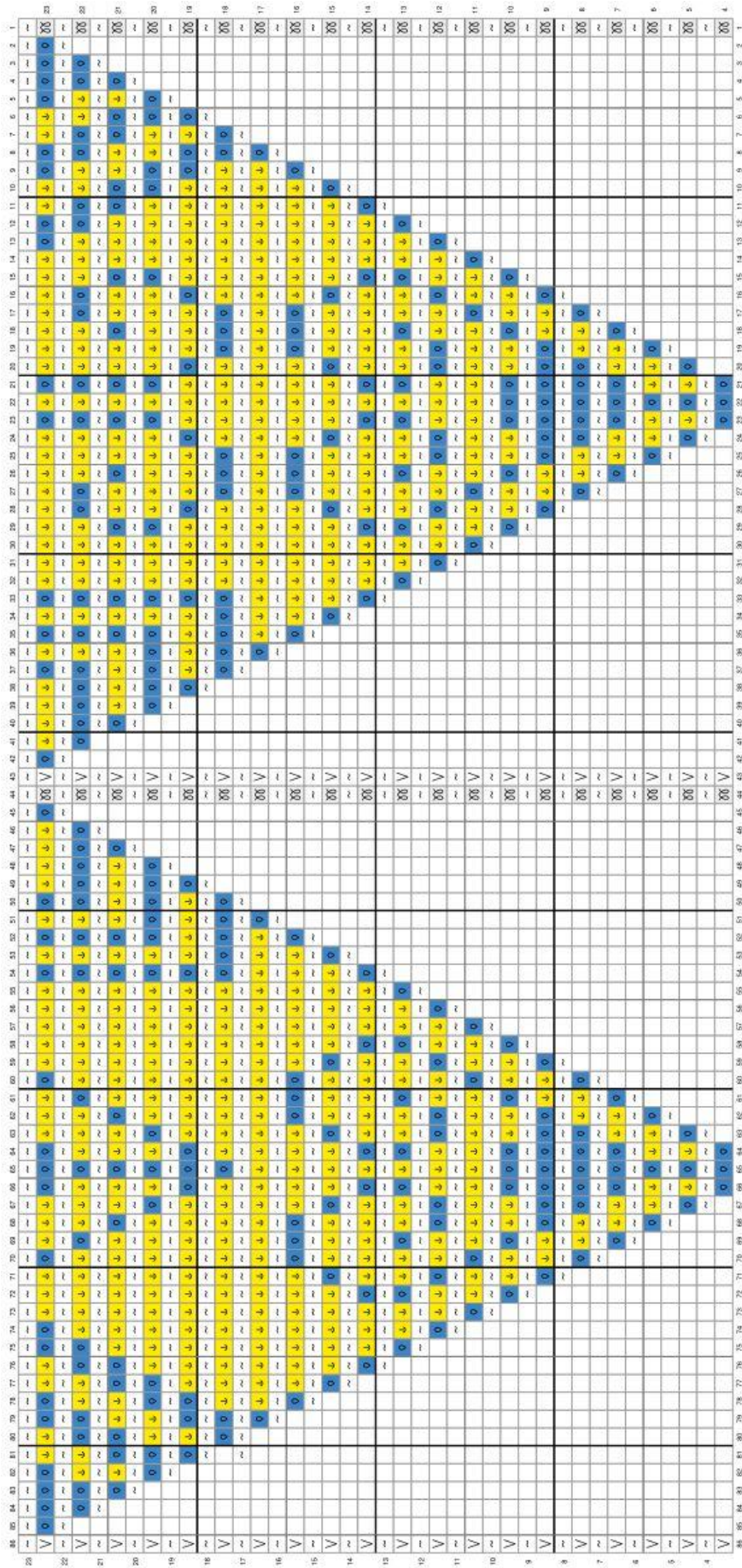
BINDING OFF

There are many ways to bind off, I worked as followed:

Make all the return stitches leaving 1 loop of color 2 on hook. Insert hook as a **TKS**, YO color 1 and PT stitches and loop on the hook (slipstitch) (1 loop on the hook). **DO NOT** increase on the corners! Close the round with slipstitch in the first slipstitch.

Weave in the ends.

Make this square 4 times.



- No Stitch
- ∞ 2nd half corner
- TKS
- ↓ TRS
- ~ Return
- V 1st half corner

